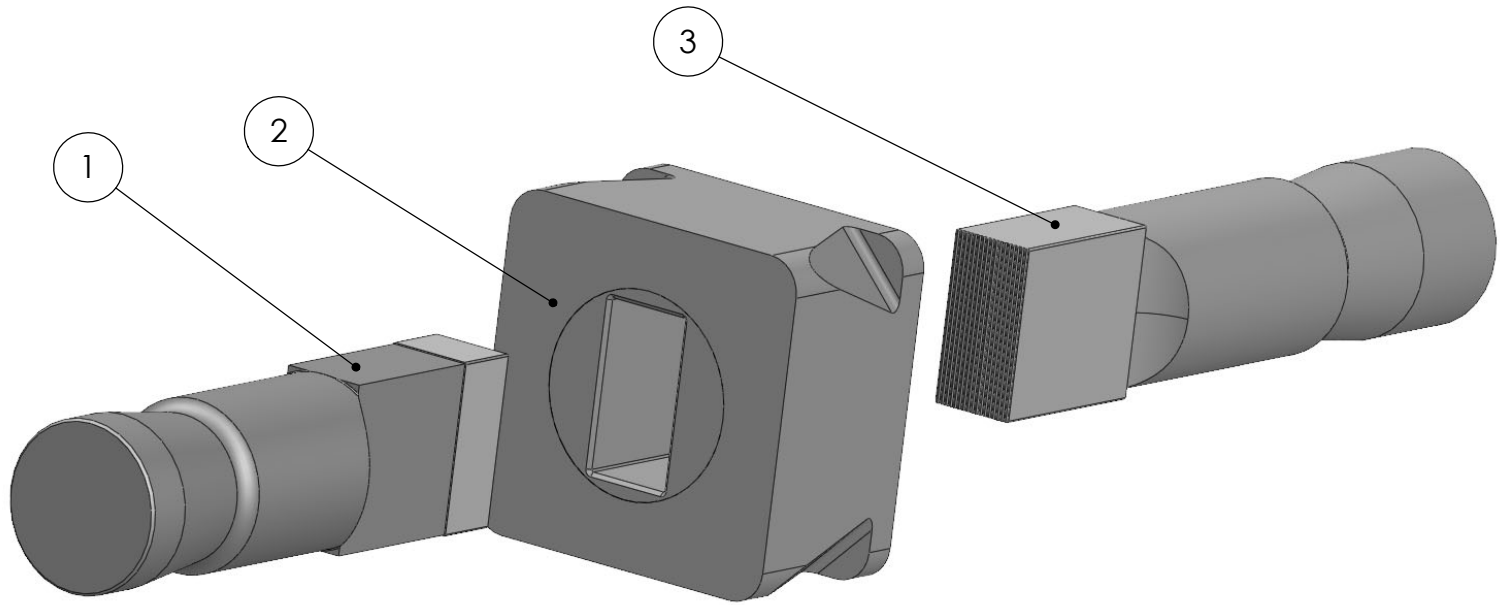



ITEM NO.	PART NAME	PART DESCRIPTION	QTY.
1	[REDACTED]-T-BP	R-PRESS BOTTOM PUNCH 1.248 DIA. X 4.500	1
2	[REDACTED]-T-DC	R-PRESS DIE CAVITY 2.481 DIA. X 1.510	1
3	[REDACTED]-T-TP	R-PRESS TOP PUNCH 1.248 DIA. X 5.250	1

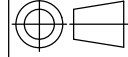


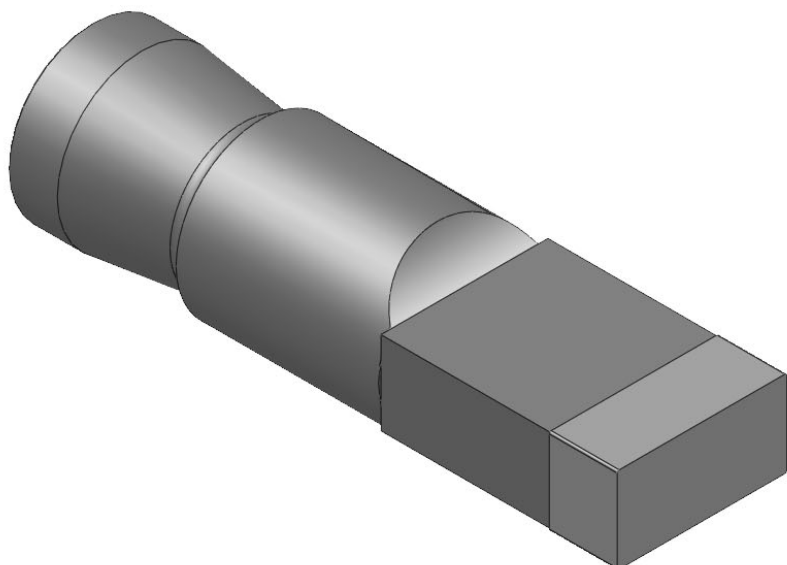
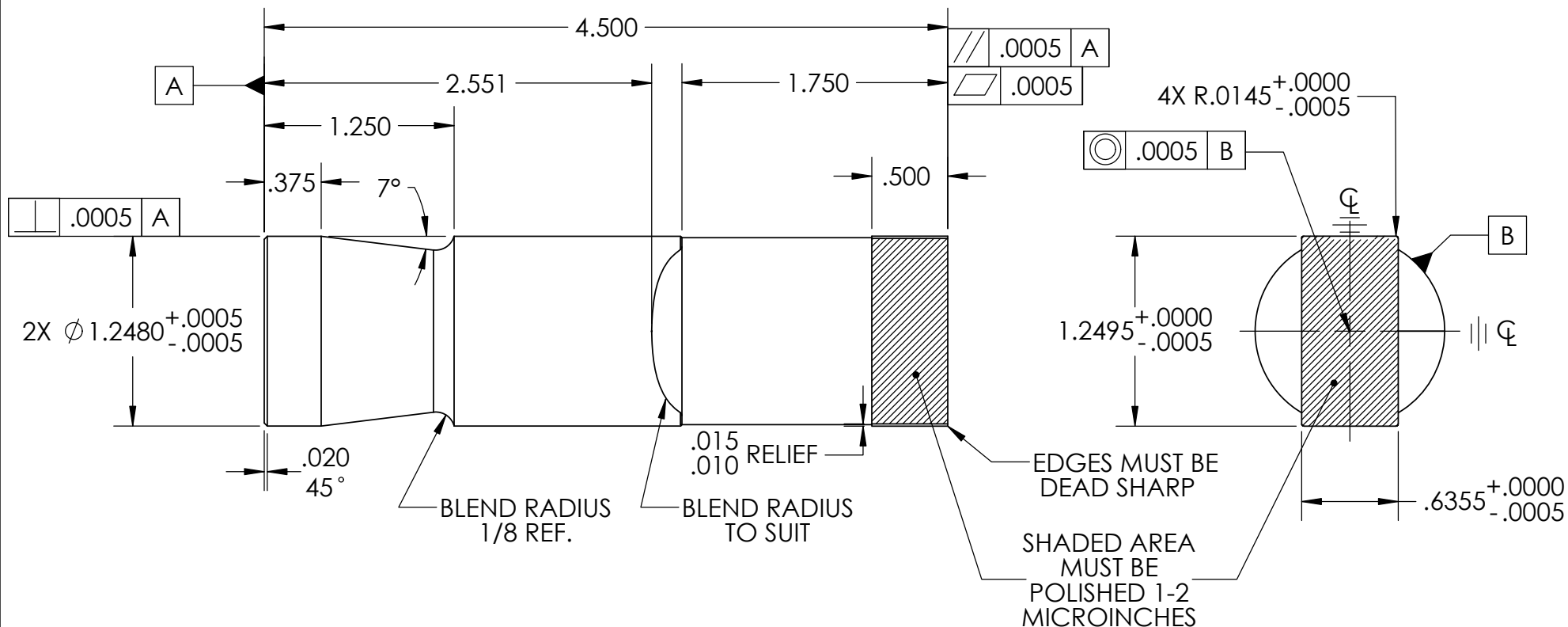
REV	INT	DESCRIPTION	DATE	DCN
R1	NT	CREATE SOLIDWORKS MODELS AND UPDATE THE DRAWING TO STD	2021-06-11	6082
R0	FC	REVISED SERR. ORIENTATION	1994-06-03	392
		REVISED BAR SERR.	1994-03-17	342
		ADDED BAR SERR.	1994-03-01	329
		REVISED AND REDAWN ON CAD	1993-11-11	0
		REMOVE 0.012 SERR.	1991-04-15	135
		REVISION	YYYY-MM-DD	DCN




Electrical Contacts Limited
519-22nd Avenue, Hanover, Ontario, Canada N4N 3T6

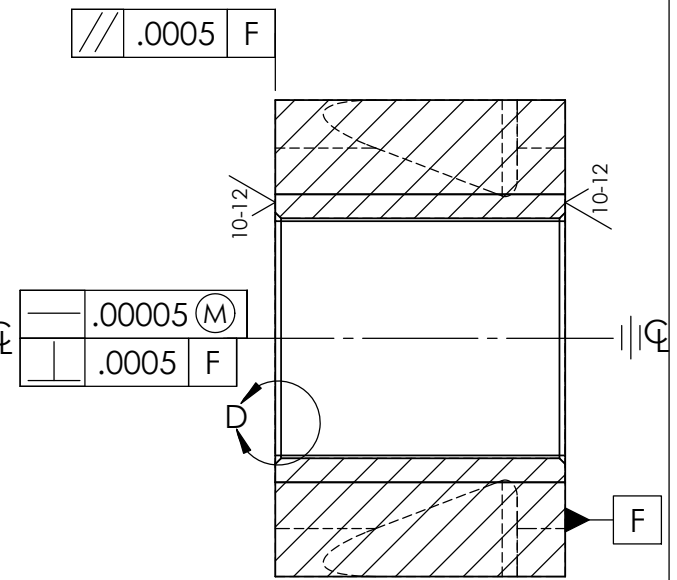
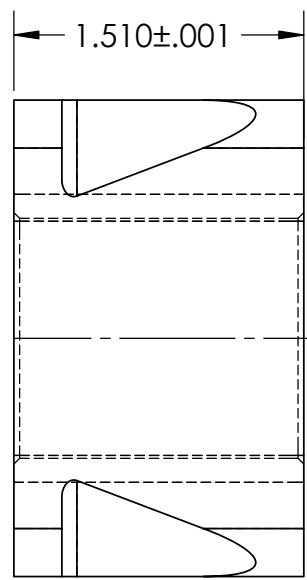
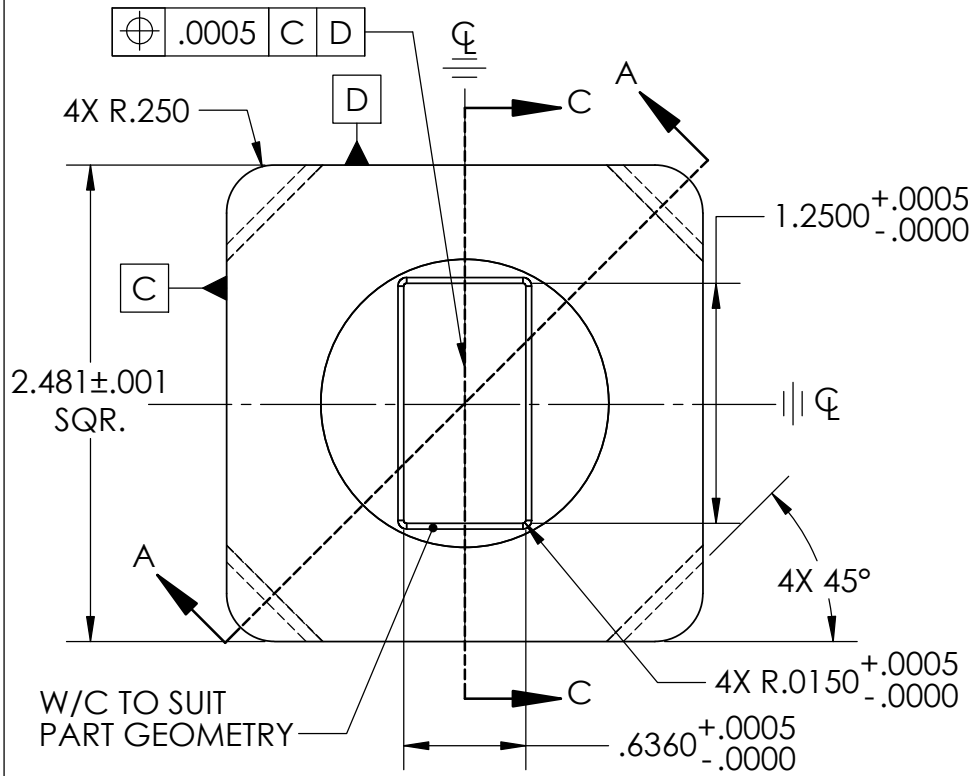
THIS DRAWING CONTAINS PROPRIETARY AND CONFIDENTIAL INFORMATION. DUPLICATION, REPRODUCTION OR USE OF THIS DOCUMENT OR ITS CONTENTS IN ANY FORM OTHER THAN PERMITTED BY ELECTRICAL CONTACTS LIMITED IS STRICTLY PROHIBITED.

TITLE: [REDACTED]-T ASSY		APPROVED BY		SHEET SIZE: A	
DESCRIPTION: [REDACTED]-T R-TOOLING ASSEMBLY		TOOL&DIE	DATE	SCALE: 2:3	
MATERIAL: REFER TO DRAWING REFER TO DRAWING FOR SECONDARY MATERIALS		ENGINEERING	DATE	TOLERANCES UNLESS SPECIFIED (INCHES)	
HARDNESS:				.XX ±.030" .XXX ±.010" .XXXX ±.005" .XXXXX ±.0005" ANGLES ±1°	
DATE CREATED: 2021-06-11		N. TRAN	2021-06-11	SHEET 1 OF 4	
DRAWN BY: N. TRAN		DRAFTSMAN	DATE		
CUST. PART #:					

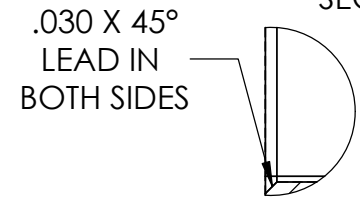
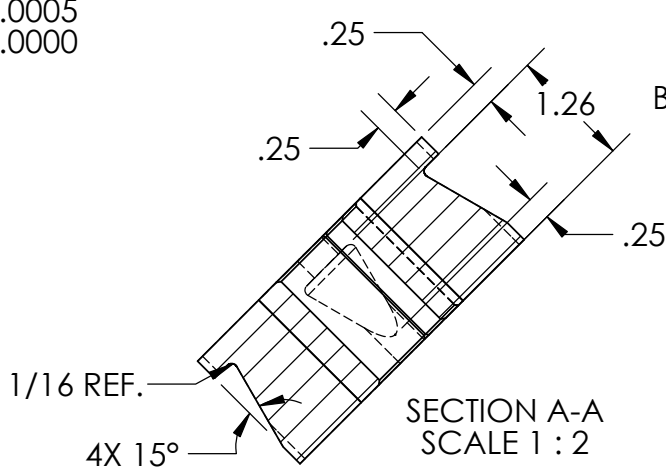
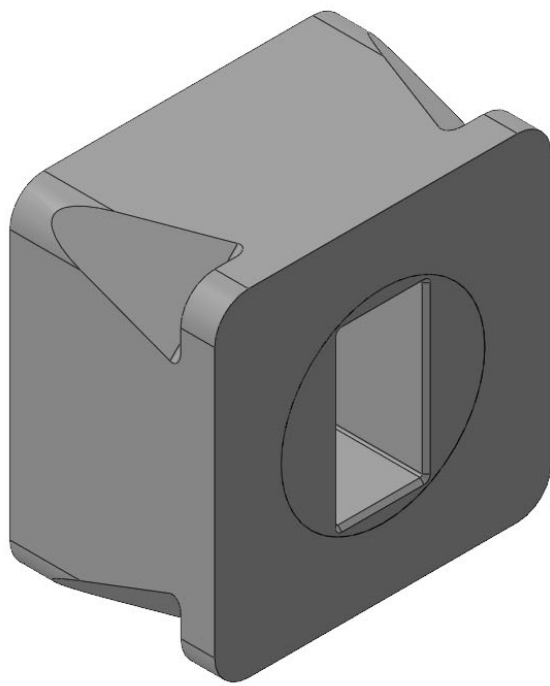


- NOTE:**
1. NO SCRATCH OR TOOLING MARKS PERMITTED
 2. ETCH: TOOL, REVISION & SERIAL NUMBER AROUND WHISTLE NOTCH


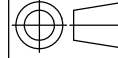
 Electrical Contacts Limited <small>519-22nd Avenue, Hanover, Ontario, Canada N4N 3T6</small> <small>THIS DRAWING CONTAINS PROPRIETARY AND CONFIDENTIAL INFORMATION. DUPLICATION, REPRODUCTION OR USE OF THIS DOCUMENT OR ITS CONTENTS IN ANY FORM OTHER THAN PERMITTED BY ELECTRICAL CONTACTS LIMITED IS STRICTLY PROHIBITED.</small>			
TITLE: ██████ IT-BP	APPROVED BY		SHEET SIZE: A
DESCRIPTION: ██████ T R-TOOLING BOTTOM PUNCH	TOOL & DIE	DATE	SCALE: 1:1
MATERIAL: A2 TOOL STEEL UNIFORM MATERIAL	ENGINEERING	DATE	TOLERANCES UNLESS SPECIFIED (INCHES)
HARDNESS: 58-60 RC			N. TRAN DRAFTSMAN
DATE CREATED: 2021-06-11			
DRAWN BY: N.TRAN			
CUST. PART #:			

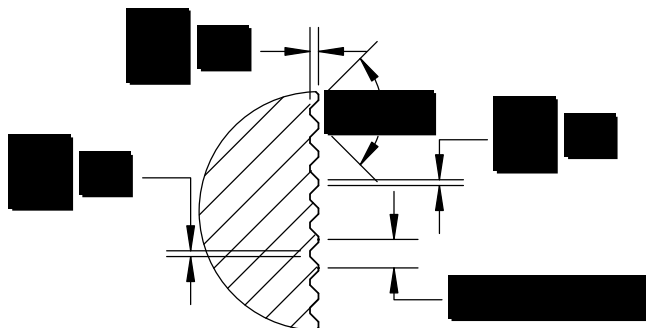
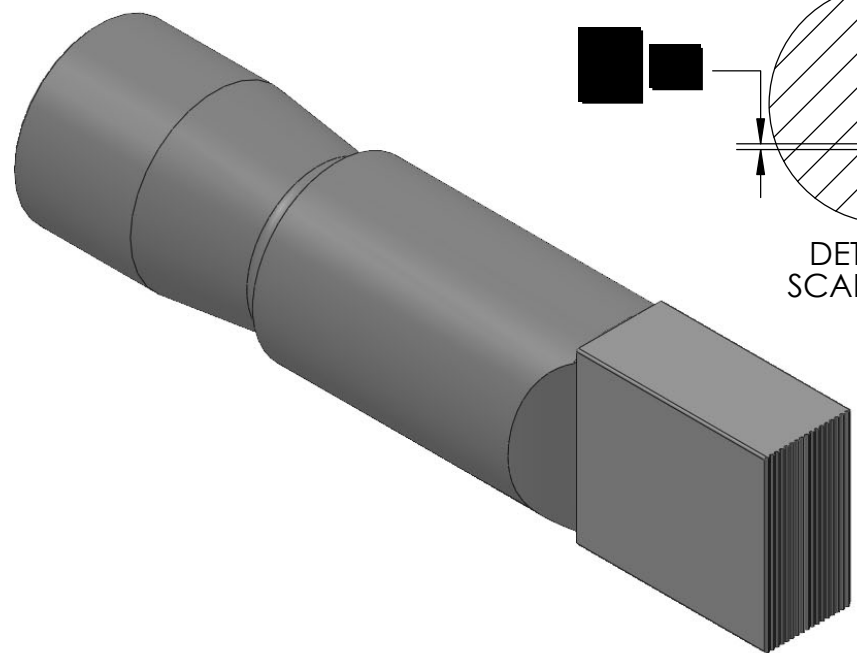
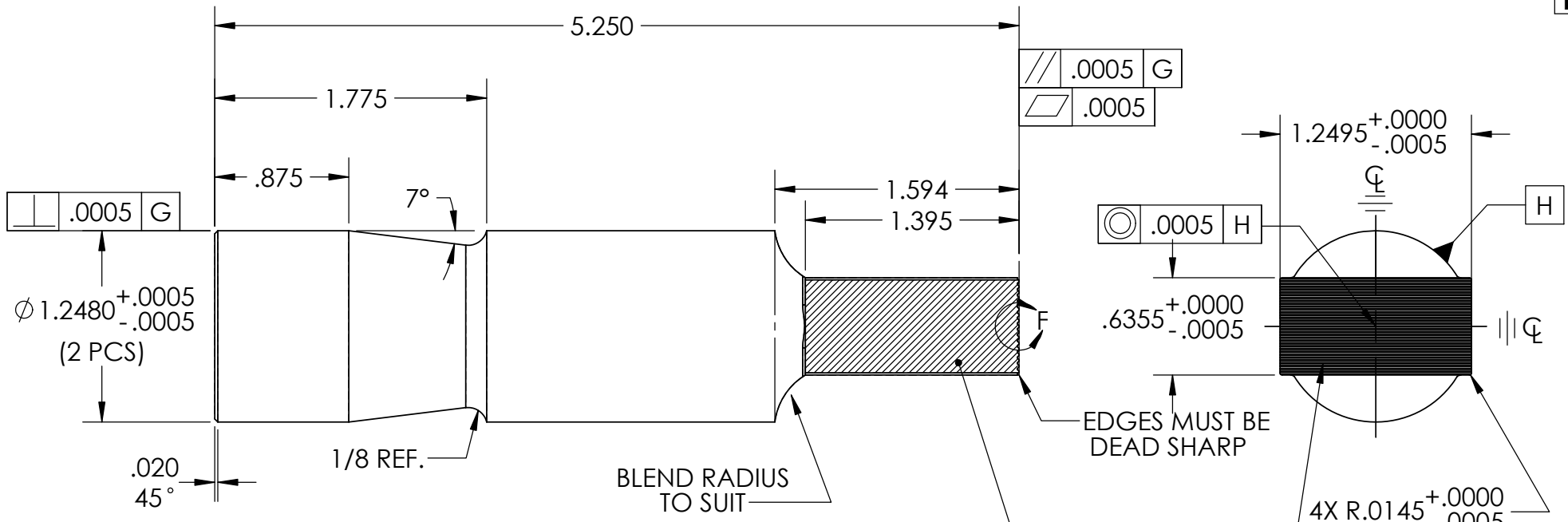


W/C TO SUIT
PART GEOMETRY



NOTE: SCALE 2 : 1
 1. NO SCRATCH OR TOOLING MARKS PERMITTED
 2. ETCH: TOOL, REVISION & SERIAL NUMBER ON SIDE

 Electrical Contacts Limited <small>519-22nd Avenue, Hanover, Ontario, Canada N4N 3T6</small> <small>THIS DRAWING CONTAINS PROPRIETARY AND CONFIDENTIAL INFORMATION. DUPLICATION, REPRODUCTION OR USE OF THIS DOCUMENT OR ITS CONTENTS IN ANY FORM OTHER THAN PERMITTED BY ELECTRICAL CONTACTS LIMITED IS STRICTLY PROHIBITED.</small>			SHEET SIZE: A SCALE: 1:1 	
TITLE: T-DC DESCRIPTION: R TOOLING DIE CAVITY		APPROVED BY		TOLERANCES UNLESS SPECIFIED (INCHES) .X ±.030" .XX ±.010" .XXX ±.005" .XXXX ±.0005" ANGLES ±1°
MATERIAL: A2 TOOL STEEL UNIFORM MATERIAL HARDNESS: 58-60 RC DATE CREATED: 2021-06-11 DRAWN BY: N. TRAN CUST. PART #:		TOOL & DIE DATE	ENGINEERING DATE	
		N. TRAN DRAFTSMAN	2021-06-11 DATE	SHEET 3 OF 4



DETAIL F
SCALE 4 : 1

- NOTE:**
1. NO SCRATCH OR TOOLING MARKS PERMITTED
 2. ETCH: TOOL, REVISION & SERIAL NUMBER AROUND WHISTLE NOTCH

Electrical Contacts Limited <small>519-22nd Avenue, Hanover, Ontario, Canada N4N 3T6</small> <small>THIS DRAWING CONTAINS PROPRIETARY AND CONFIDENTIAL INFORMATION. DUPLICATION, REPRODUCTION OR USE OF THIS DOCUMENT OR ITS CONTENTS IN ANY FORM OTHER THAN PERMITTED BY ELECTRICAL CONTACTS LIMITED IS STRICTLY PROHIBITED.</small>					
TITLE: EC531T-TP		APPROVED BY		SHEET SIZE: A	
DESCRIPTION: [REDACTED] T-TP TOOLING TOP PUNCH		TOOL & DIE	DATE	SCALE: 1:1	
MATERIAL: A2 TOOL STEEL UNIFORM MATERIAL				TOLERANCES UNLESS SPECIFIED (INCHES)	
HARDNESS: 58-60 RC		ENGINEERING	DATE	.XX ±.030"	
DATE CREATED: 2021-06-11				.XXX ±.010"	
DRAWN BY: N. TRAN				.XXXX ±.005"	
CUST. PART #:		N. TRAN DRAFTSMAN	2021-06-11 DATE	ANGLES ±1°	
				SHEET 4 OF 4	